

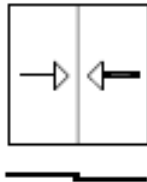
Technische Information

FOPPE Aluminium-Leichtlauf-Schiebetür

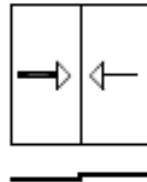


Typenübersicht

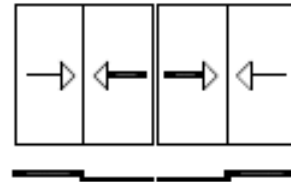
Typ 2.2.R



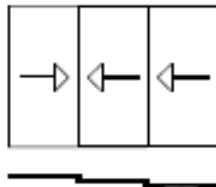
Typ 2.2.L



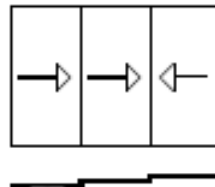
Typ 2.4.M



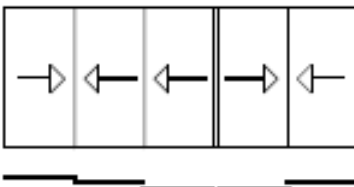
Typ 3.3.R



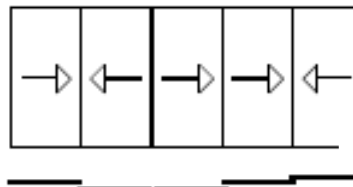
Typ 3.3.L



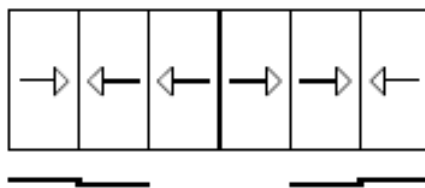
Typ 3.5.MR



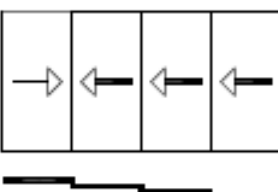
Typ 3.5.ML



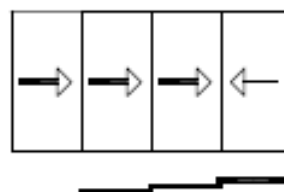
Typ 3.6.M



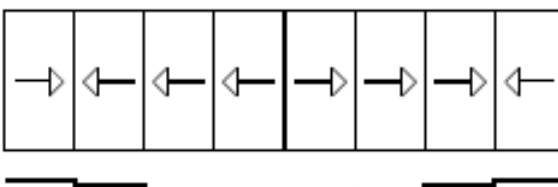
Typ 4.4.R

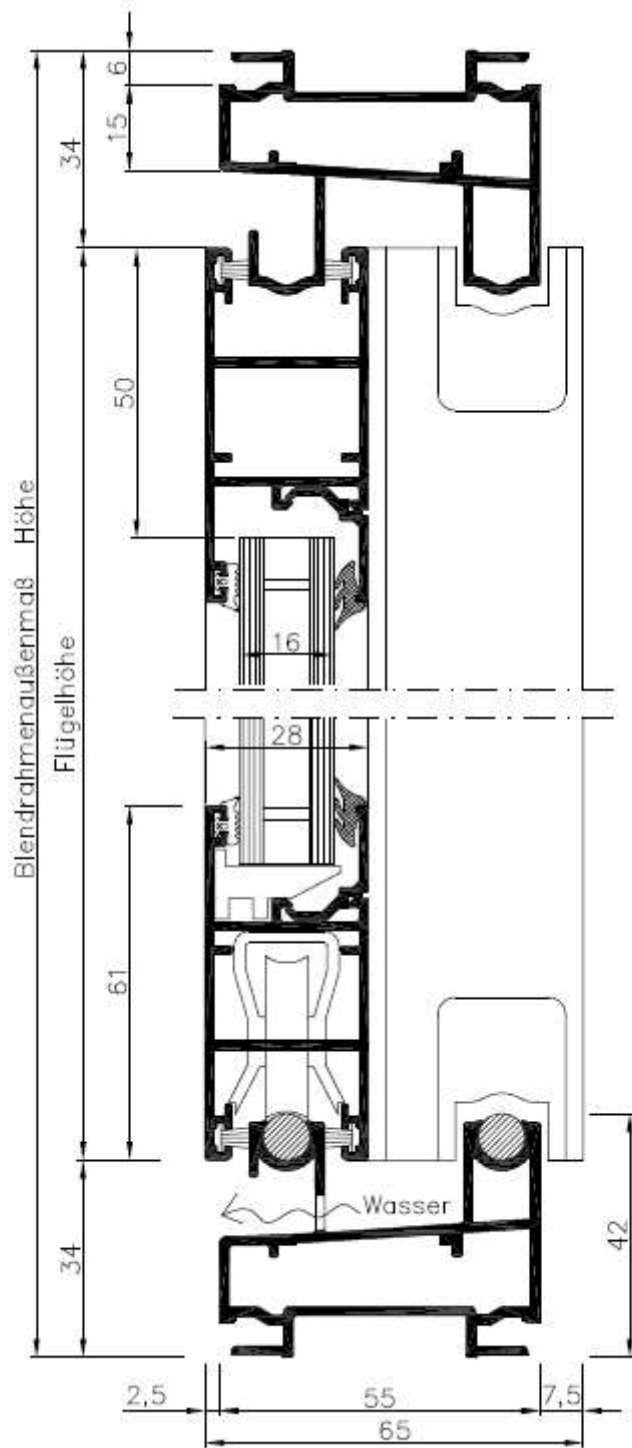


Typ 4.4.L

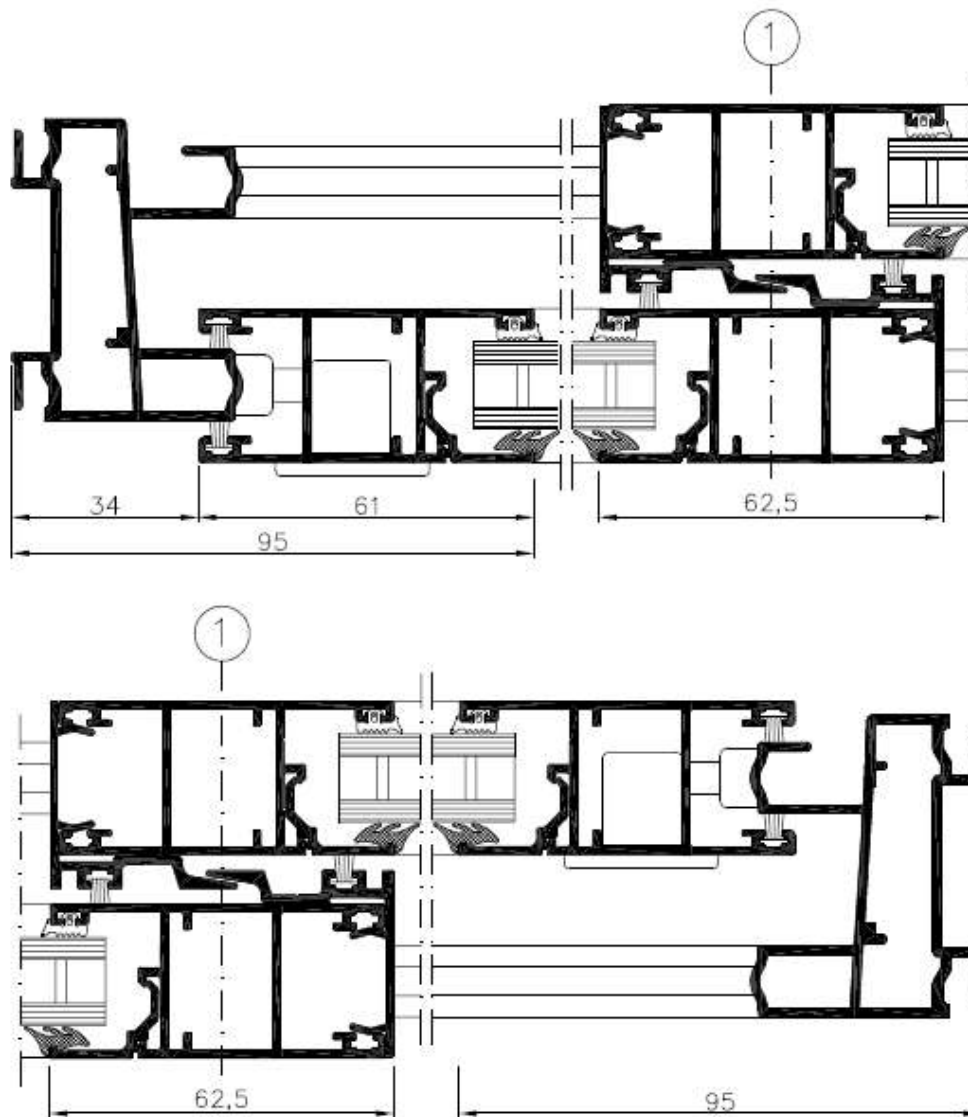


Typ 4.8.M

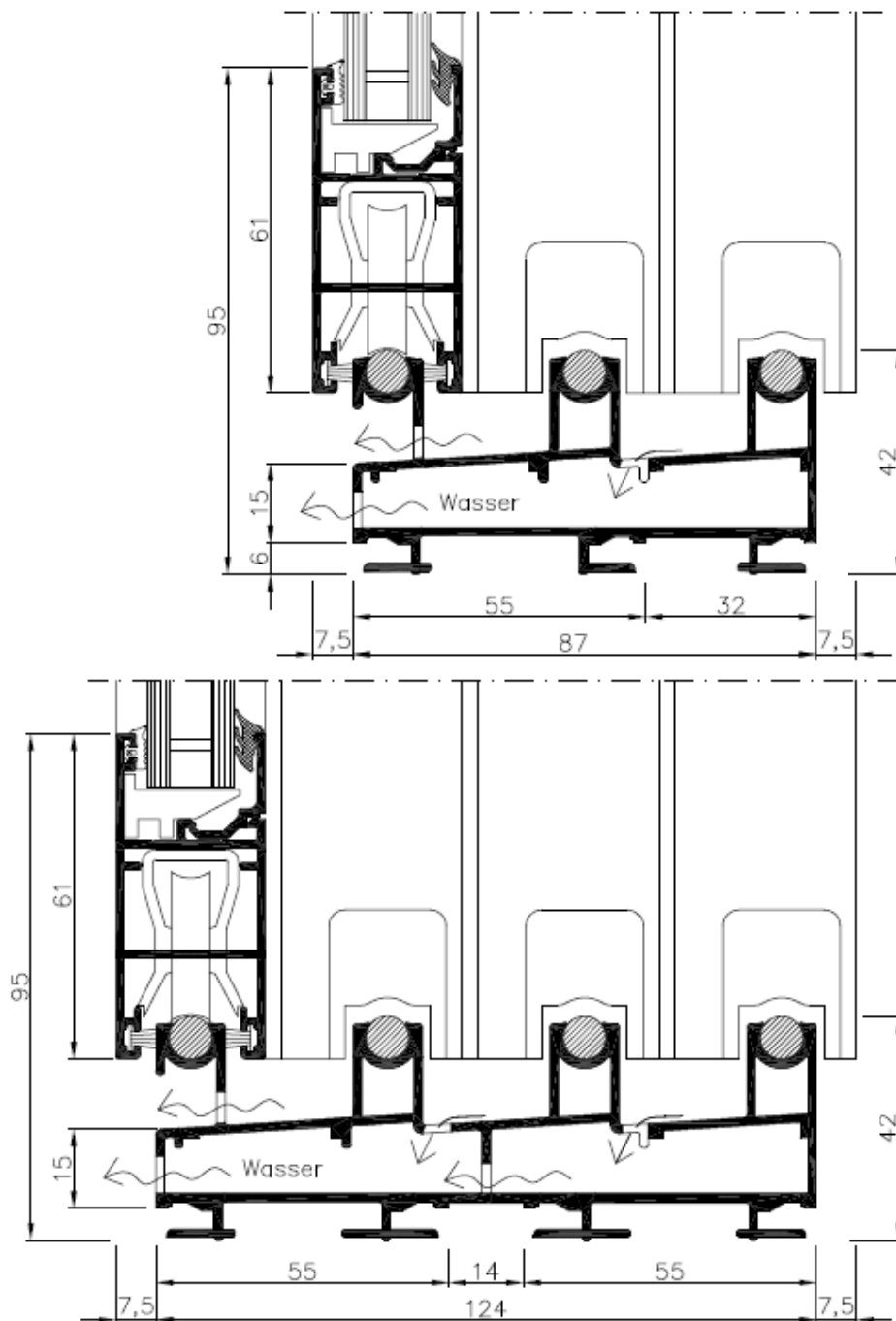


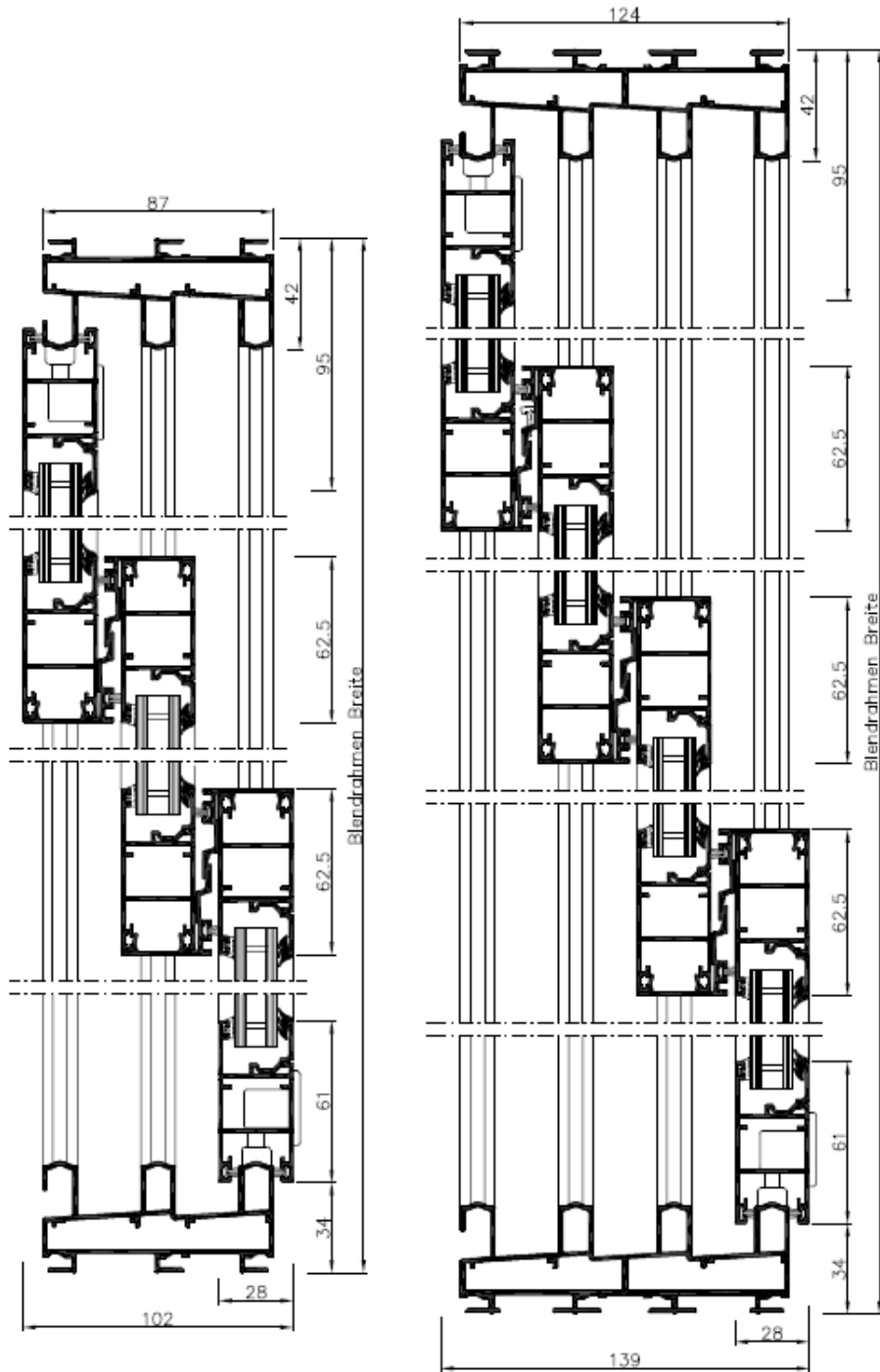


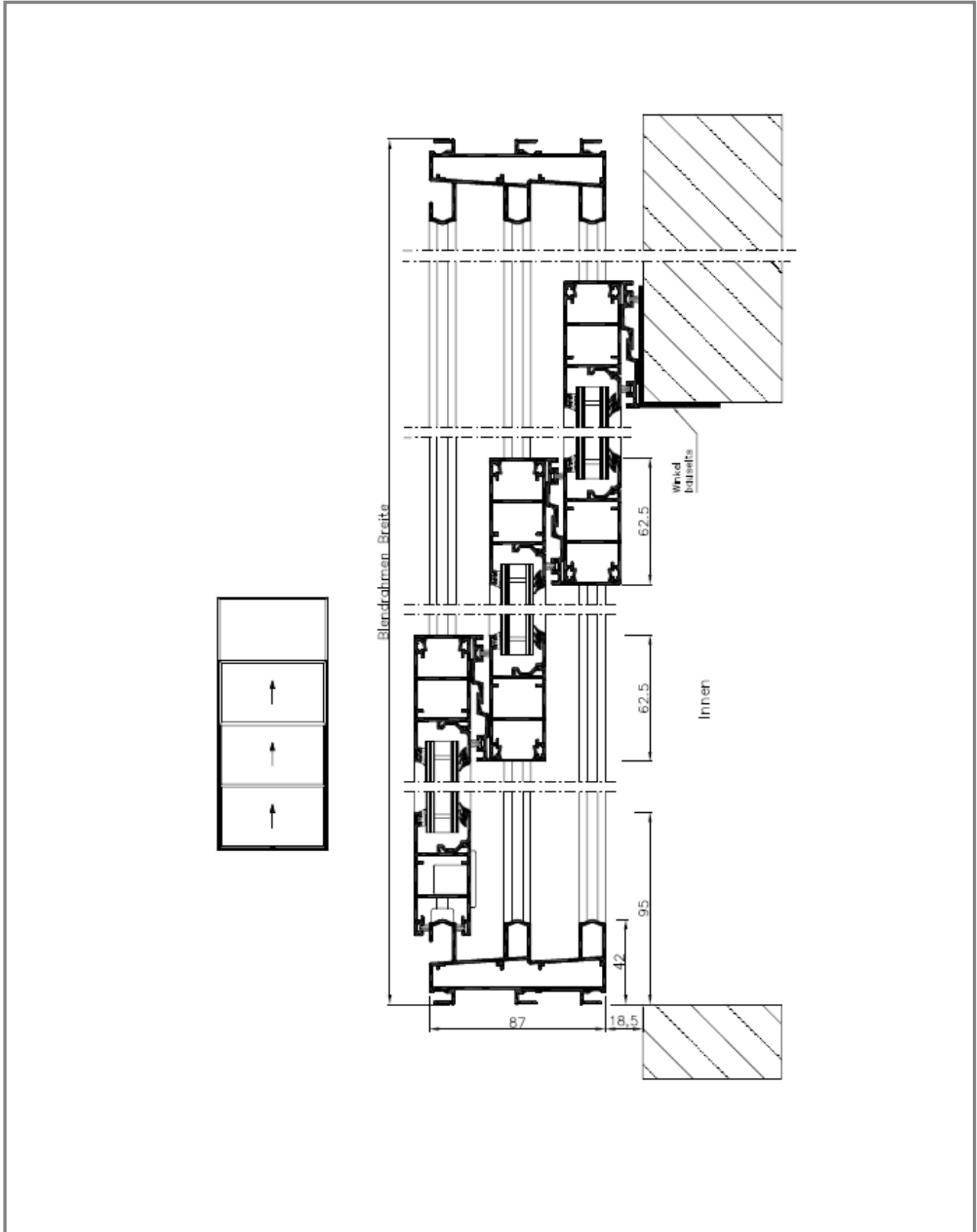
Systemschnitte

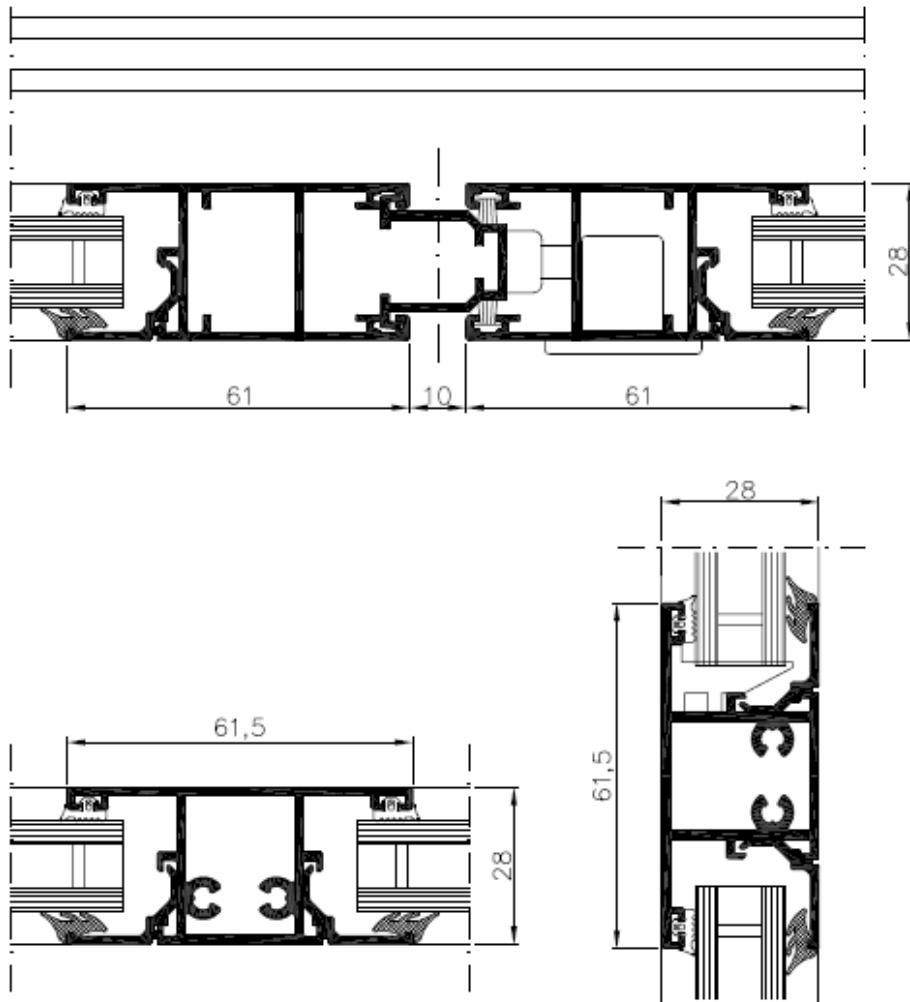


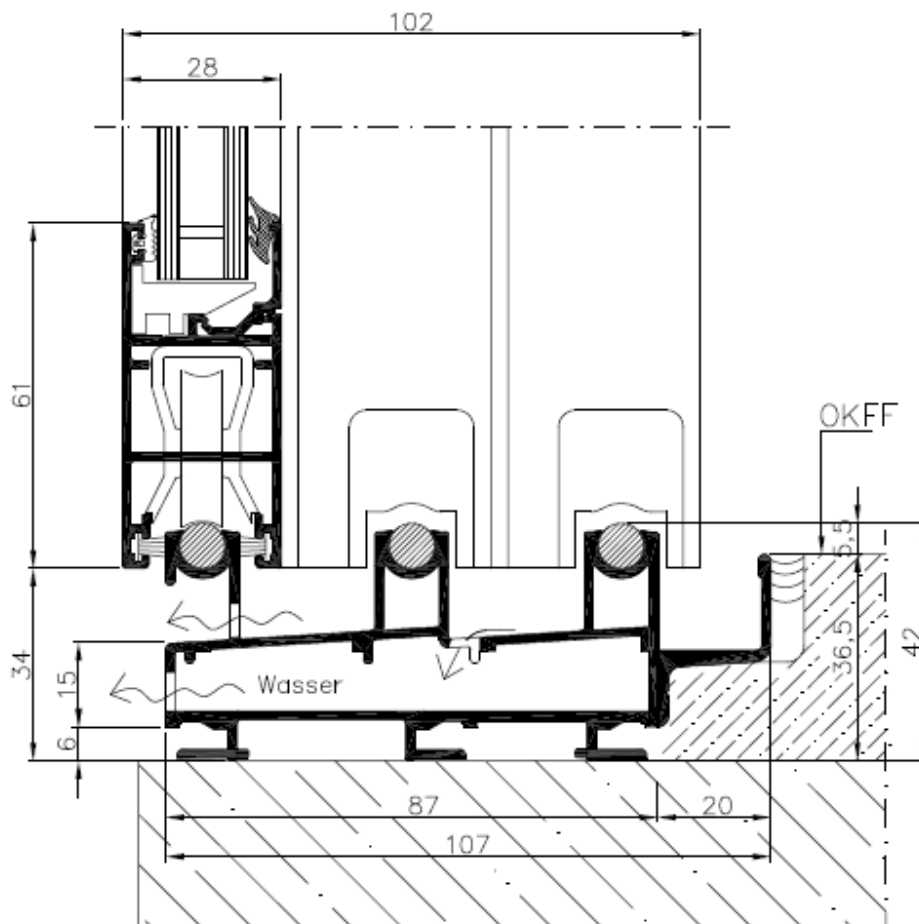
Systemschnitte

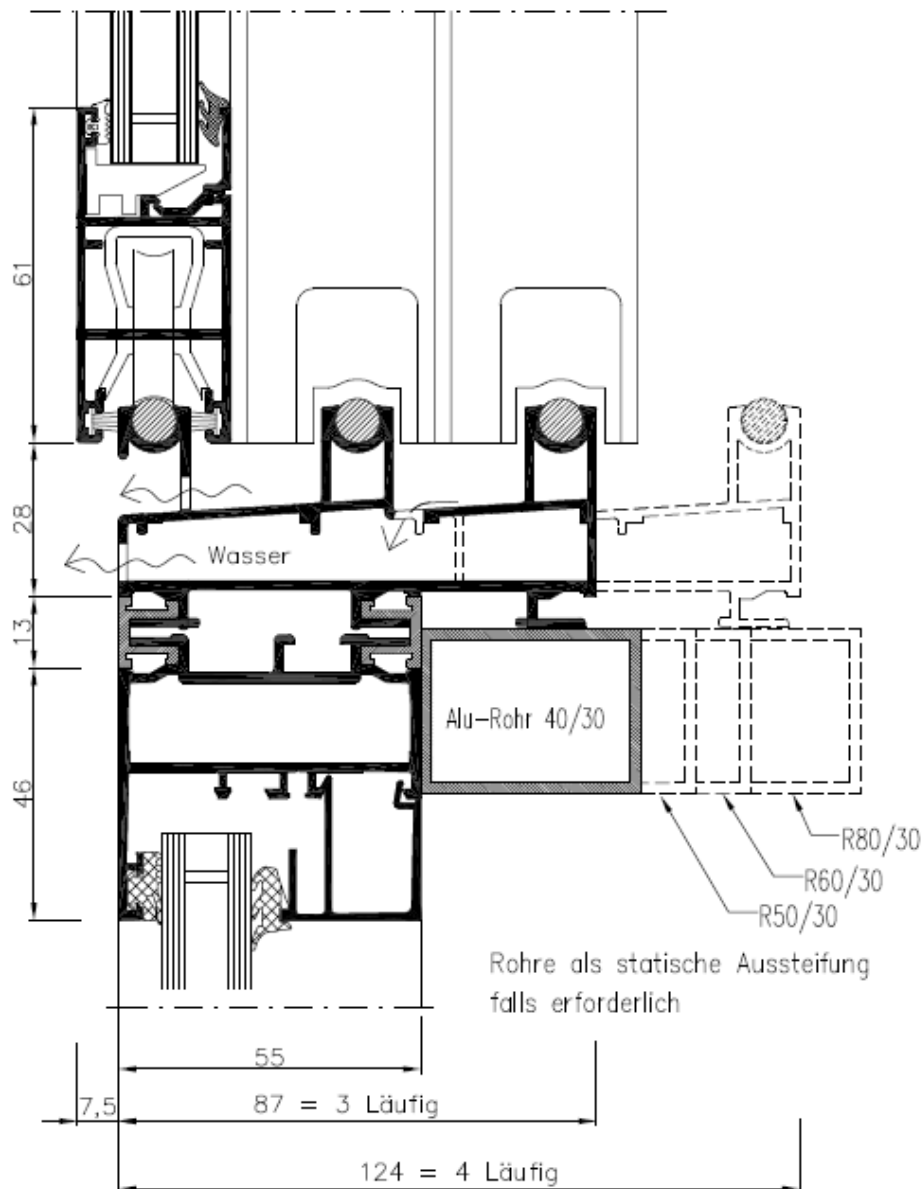


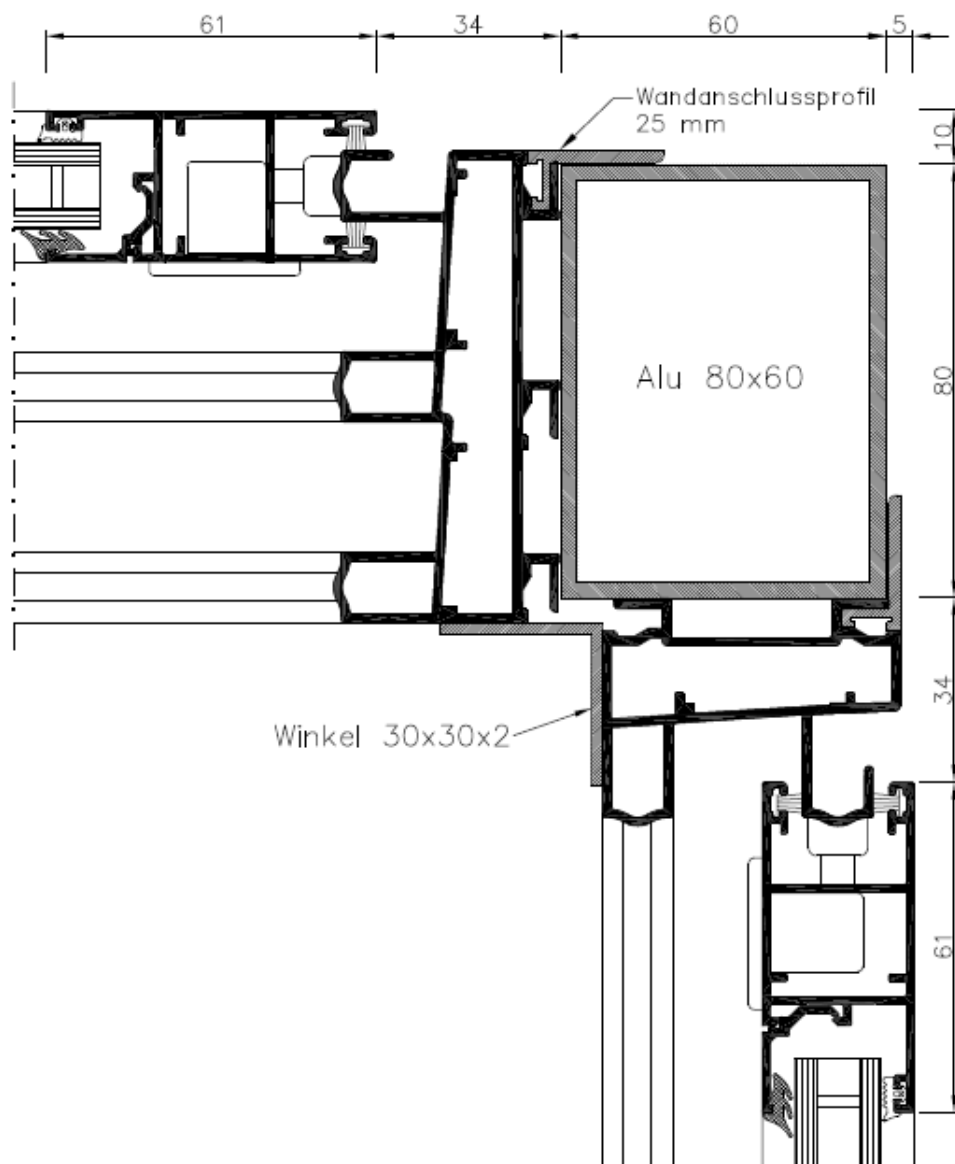


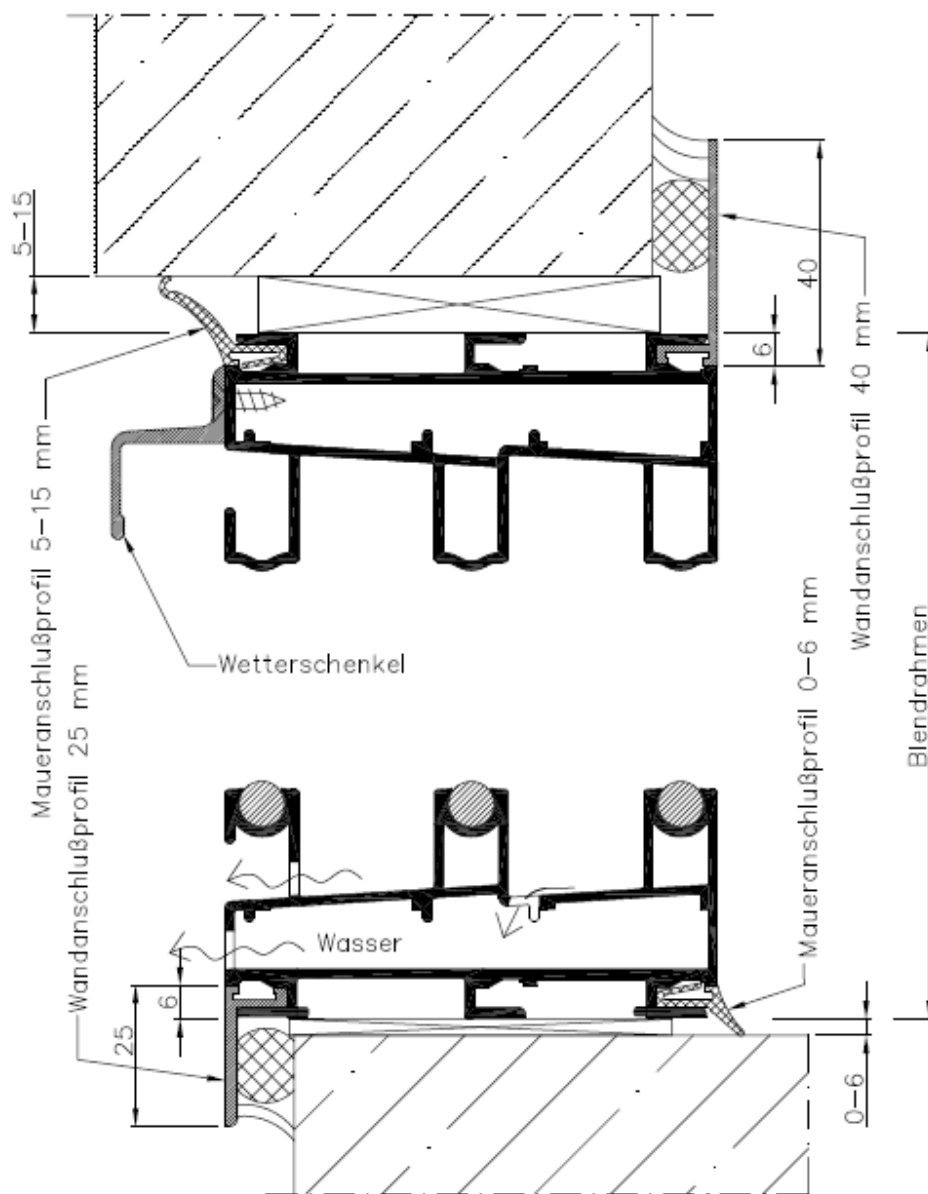




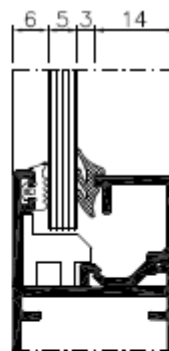
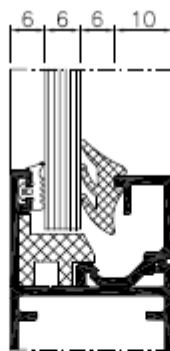
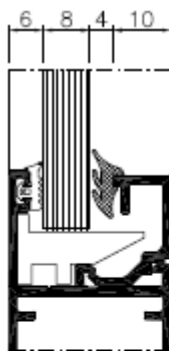
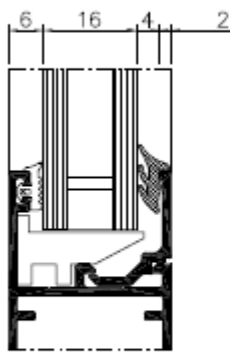


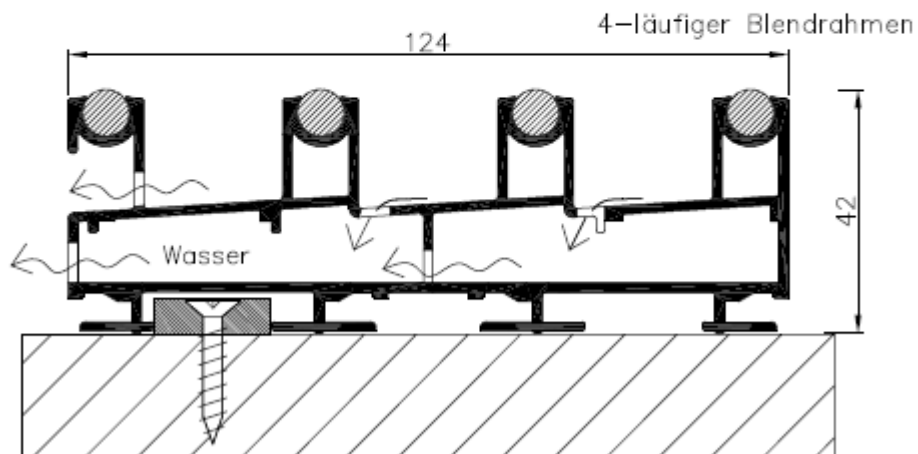
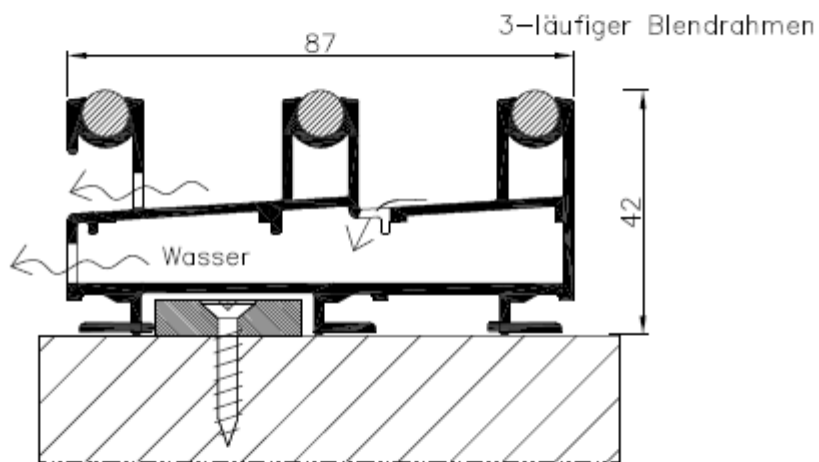
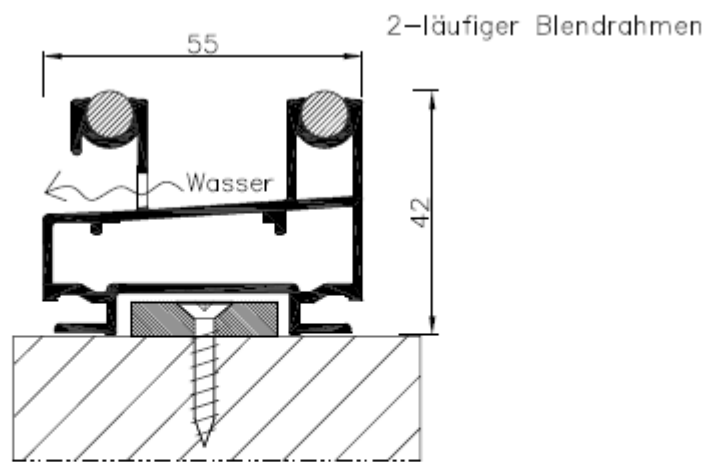


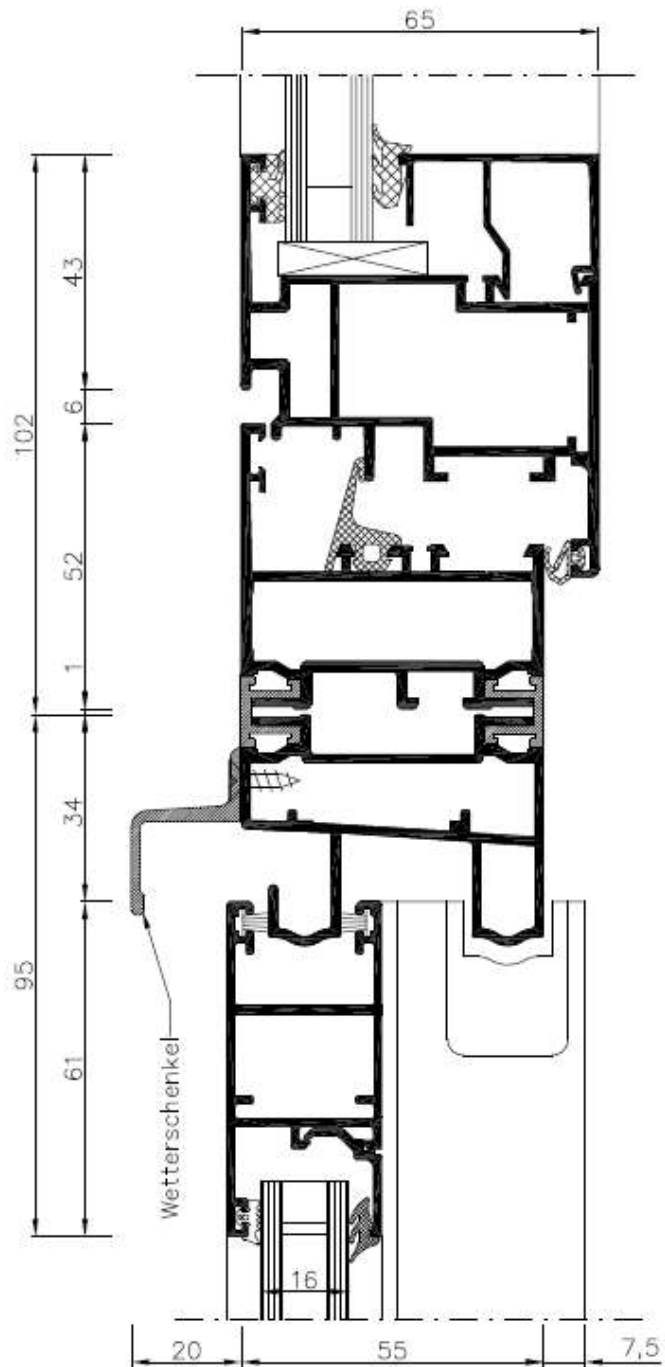


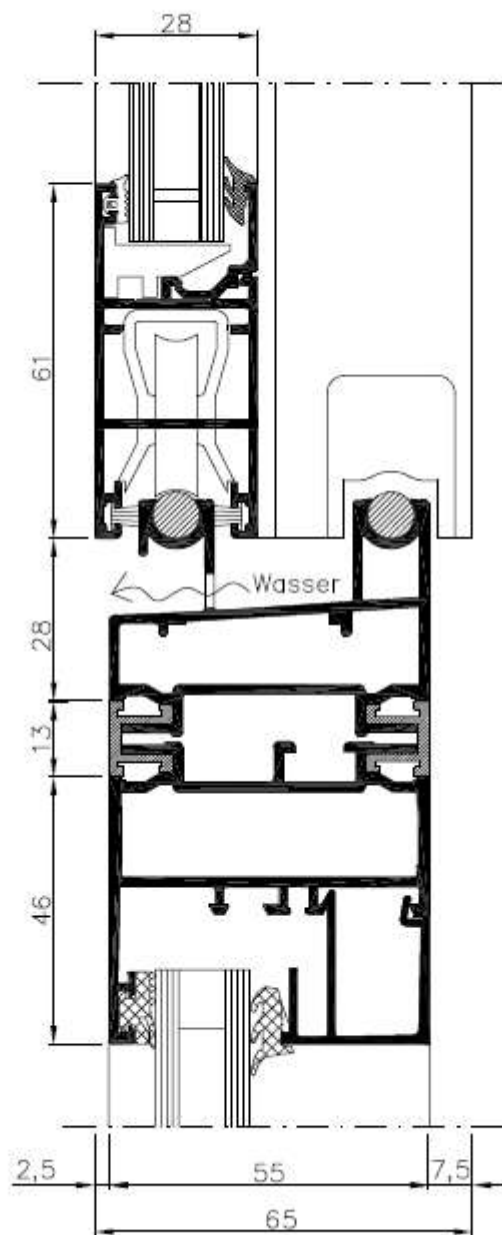


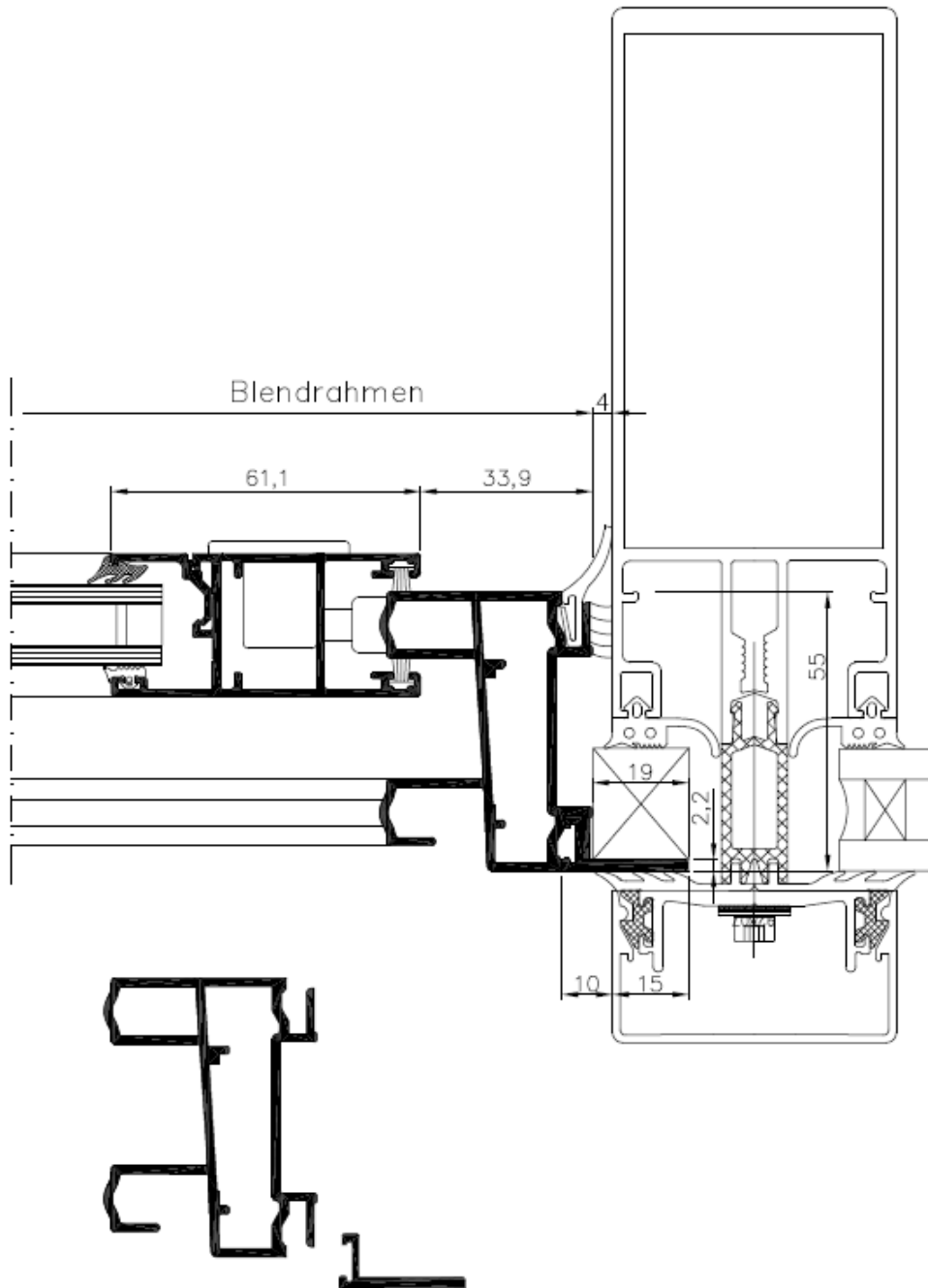
Systemschnitte













FOPPE Metallbaumodule GmbH
Foppenkamp 18
49838 Lengerich (Ems)
Germany

Phone: +49 5904 950-0
Fax: +49 5904 950-190
E-mail: info.module@foppe.de